

## Bear Rug Part 2 of 2



In this tutorial we start out with an Aaron Connelly rug shell from from H.Q supply. The rugshell is sent in 4 pieces. A head form, Mohr detailed mouth cup, chin piece and an artificial nose unless you desire the foam nose. Refer to the 3<sup>rd</sup>

edition HQ catalog for detailed assembly of the rug shell.

Rehydrate the head and neck of the bear skin. Refer to your tanneries instructions on rehydration. The head of this skin was soaked in 5 gallons of warm water and 2 ½ lbs. of salt.



Test fit the bear skin to the rug shell. Before test fitting the skin, make sure it is split all the way up the throat leaving about 1" of chin upsplit.

After assuring proper fit, the nose pad on the bear skin can be trimmed off at the hair line. Use a small sharp scalpel

for this.

Test fit the skin again with the nose pad cut off and make sure everything is still a good fit. Make sure the muzzle skin butts up to the artificial nose edge. Also make sure the lip skin lines up with the artificial lips on the mouth cup.



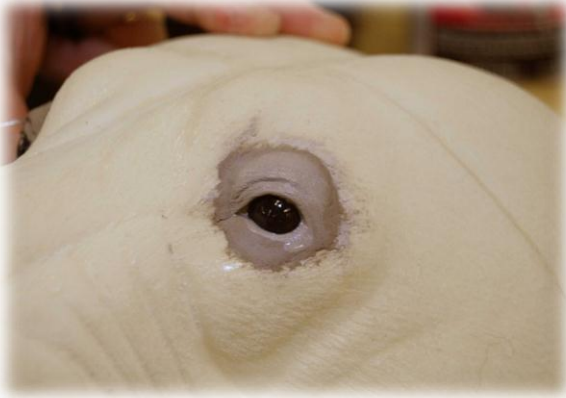
Before the next steps, you need to decide whether or not the lip skin is going to be glued next to the sculpted lips of the rugshell or tucked in between the mouth cup and foam part. For this tutorial, we decided to glue the skin next to the jaw set. For this method you would trim the lip skin of the bear

with a scalpel almost to the hair line, only leaving 1/8" of the lips skin on the bear. I always like to test fit one more time after trimming the lip skin. Since these forms were so accurately sculpted, it is very rare that a fitment problem will occur.



Slide the skin of the rug shell and prep the skin for mounting. Thin the eyelids and the trimmed off edges around the nose and lips.

After the skin is ready the form needs to be prepped. Sand the form, making sure the foam next to the mouth cup is sanded but be careful not to hit any of the plastic mouth cup with the sand paper. Also, the



surface around the artificial nose needs to be sanded. Blow off the excess dust and wipe around the nose edge with acetone to remove anything that

might cause adhesion problems.

Also wipe around the edges of the bear lip skin with acetone.

Next, wipe down the inside ear skin with acetone and the ears are ready for bondo or earliners. After making the earbutts out of clay, add clay to the area of the form in which the ear will sit. After the ears are done, sculpt the eyes in with critter clay.

The rug shell is now ready for hide paste. Apply hide paste as normal staying  $\frac{1}{4}$ " away from the mouth cup. Then slide the skin over the rugshell.

First glue the nose. Start at the corner and work your way around doing a little at a time, make sure the skin around the nose stays lined up. Push the skin next to the nose as it dries. Any type of quick drying, strong glue will work. We chose Super Glue Gel.





After the nose is glued the lips are next. Line the lip skin up, making sure everything

is in the proper position before starting. Begin at the corners by gluing a small



amount of skin at a time and work your way around. Use a modeling to keep the skin pressed up to the mouth cup while glueing. Do not worry if there is a small gap between the skin and mouth cup after the glue dries, that can be fixed later.

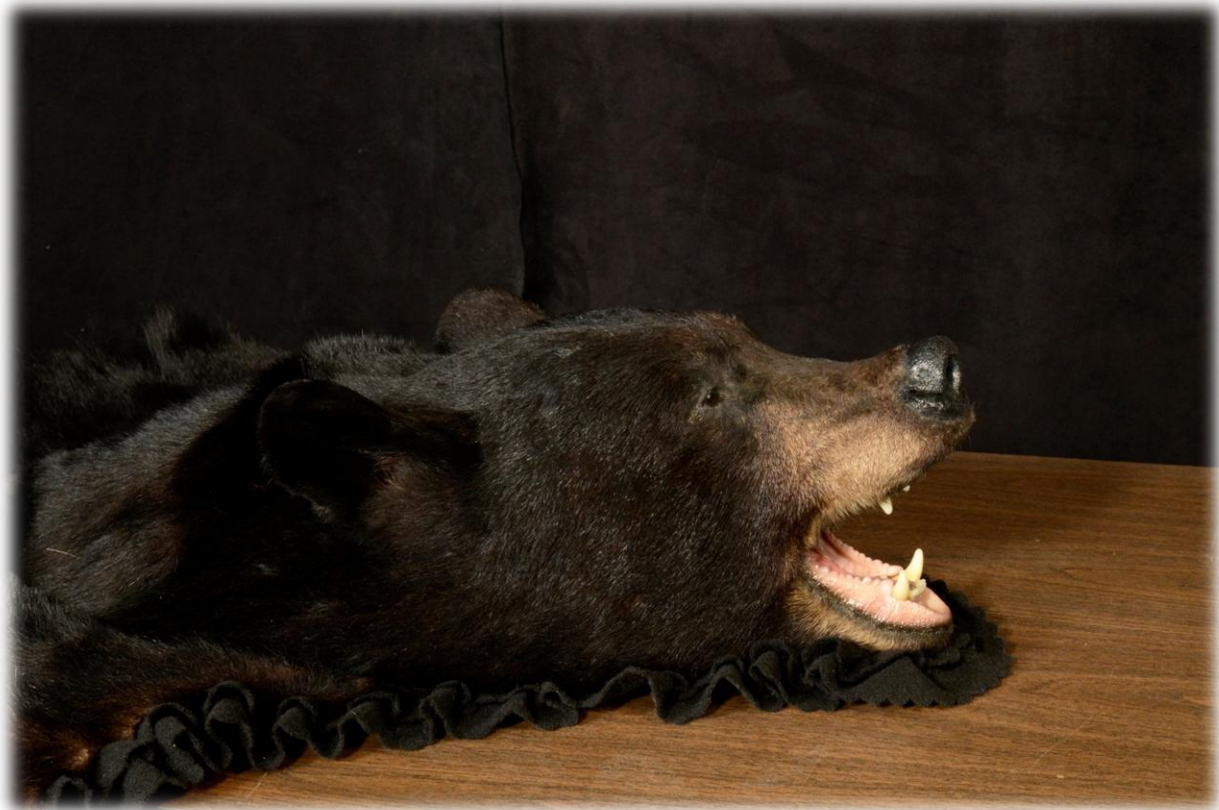


The bear is now ready to be finished and rugged. Proceed with finish work as normal. It is likely that there will be a small gap in between the skin and the artificial nose and the mouth cup. Fill this in with Aves Fix-It apoxie. Smooth with a brush and Aves safety solvent and then

texture with a stiff briselled brush. Let dry and the head is ready to be painted.



Finished Bear Rugged by Shipman's Wholesale Rugging.



Tutorial by Jeremy Morgan, Mount by D. Price